



HOLIDAY VILLA

SPANISH ALGARVE

A photograph of a modern, two-story white villa with balconies and a swimming pool. The villa has large windows and doors, and the balconies are enclosed with black metal railings. A swimming pool is visible in the foreground, and a paved terrace with outdoor furniture is in front of the villa. The background shows a clear blue sky and some distant houses on a hill.

Welcome to
COSTA ESURI



Welcome to **COSTA ESURI**

Dear Visitors,

All the facilities within these properties are available to you for your use, and all we ask is that you treat them with the same care that you would your own. There is a strictly NO SMOKING policy. Smoking is permitted outside providing you dispose of your cigarettes in the bins provided. Any smoking inside will forfeit your security deposit. Occasionally digital televisions and receivers freeze. If the TV can't find the channels, please turn off at the mains and reboot. As we're listed on many accommodation websites which have the facility to leave feedback, we would kindly ask that if you are contemplating negative feedback can you please contact us first so that we may resolve any problems to your satisfaction (Sandra@beals.co.uk). We thank you in advance for any positive comments you may wish to leave as this helps us with future bookings. We would like to offer a 10% discount on your next visit or when a friend or family member books directly with us on your recommendation.

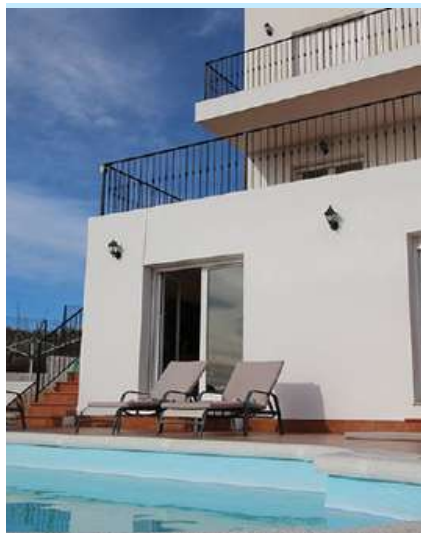


About Our VILLAS



VILLA *Moliner*

Stunning detached villa with private pool and air conditioning. Beautifully located with views down to the beautiful River Guadiana that divides Portugal and Spain. Ideal for families and golf enthusiasts.



VILLAs *Altos*

Two detached villa's, each with a private pool and air conditioning. Beautifully located with views down to the gorgeous river Guadiana that provides the border between Spain & Portugal, so you have the benefits of visiting & enjoying both countries & their respective cultures in one vacation. Ideal for a family holiday or wedding parties as each Villa can hold ten people. These properties are linked via a garden as well so ideal for those larger parties.

We would be grateful if all guests could kindly observe the checkout procedure below when leaving.

- Check out time is 11:00 am
- Please leave the accommodation in a similar condition to how you found it on arrival
- Please strip all beds of bed linen and leave in the respective bedrooms
- Please turn off all lights and ensure ALL AIR CONDITIONING UNITS ARE OFF
- Please empty all bins and dispose of your refuse
- Ensure that the fridge and freezer are emptied in full and left clean
- Ensure all windows and doors are shut and leave the front door keys inside the property in the kitchen

While we fully accept that accidents occur from time to time, we reserve the right to charge you for reckless/wilful damage or any excessive cleaning required (including tobacco smells)



Villa FEATURES



AIR CONDITIONING

It is an expensive commodity both to run and for the environment so please use it sparingly and DO NOT leave it on when the villa is unoccupied. If you keep the shutters closed during the daytime the property will stay reasonably cool.

To use the air conditioning units:

- Each unit has a battery operated remote control unit
- Press the central button on the control unit for on and off.
- For cold air, the cold sign should display.
- For heat display the heat sign.
- Temperature can be increased and decreased accordingly
- Please remember air conditioning will only work efficiently if the doors and windows are closed!
- NB. During the cooling cycle, condensation from the drainage pipes on the outside units is normal.



KITCHEN

Within the kitchen are the microwave, fridge/freezer & dishwasher. These items are all self-explanatory. Please remember to remove any perishable foods before departure.

An iron and ironing board along are also provided for guests.



TOWELS

The towels are available for your personal use. And MUST NOT be removed from the villa. Please do not take house linen to the pool or beach.

HOT WATER

The hot water uses a storage tank with an electric element. In the unlikely event that you should use all the water, it will reheat very quickly – useable hot water within 30 minutes.

BREAKAGES

Accidents are inevitable and sometimes occur. All we ask is that you inform us as soon as possible for the item(s) replacement. Please do not sit on furniture in swimwear or when using sunscreen.



General DETAILS

BANKS

Most banks have a representative who can speak English. All the banks have ATMs. Passports are required when changing money. Banks opening hours are Monday - Friday 08.30hrs - 14.00hrs. In the summer some banks are open Saturdays 08.30hrs - 13.00hrs

POST OFFICES

In Ayamonte open Monday - Friday 09.00hrs - 14.00hrs (It varies elsewhere). Stamps are sold at Tobacconists (look for brown and yellow "Tabac" sign)

PETROL

The nearest Petrol Station is Saras on the A49 both sides of the carriageway, or there is a BP station on the road into Ayamonte, by the La Plaza shopping centre. As petrol is cheaper in Spain than in Portugal, there are often long queues. Diesel is gasoleo (the black pump), and Unleaded is sin plomo. Out of hours, petrol is usually only available by pre-payment either at the pump with a card or through a night hatch at the cashier's desk.

HEALTH

THE EMERGENCY TELEPHONE NUMBER IS 112

CHEMISTS

Known as 'Farmacia' and marked with a green cross, and are easily spotted in streets. Most pharmacists speak some English. There will always be a duty chemist open 24 hours so if out of house check the notice on the door.

MEDICAL CENTRES

Medical services are available at the following addresses:

- Centro de Salud Ayamonte, Main Avenida **TEL: 959 470 880**
- Centro de Salud Isla Cristina, Avenida Arquito Aramburn Maqua **TEL: 959 343 353**
- Centro de Salud de Lepe, Calle el Rompido **TEL: 959 383 190**
- Centro de Salud, Avenida Castilla, La Antilla **TEL: 959 481 270**

These are open 24 hours and are equivalent to the walk-in centres in the UK. If you require treatment, please take your passport and European Health Insurance card - doing so could save you money.

Facilities on COSTA ESURI

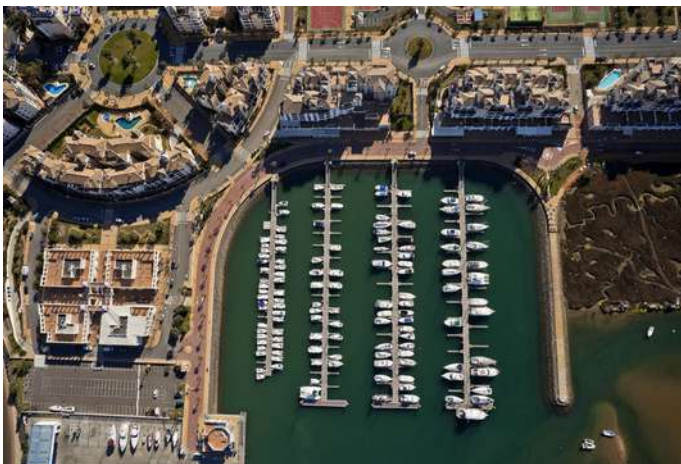
SUPERMARKET - SUPERMERCADO COVIRAN IS BASED AT COSTA ESURI

Observing traditional Spanish opening hours (closes for a siesta after lunch) this little convenience store is ideal for fresh bread and all your holiday essentials. The shop owner, Manolo, prides himself on stocking a few English treats that are usually hard to find in this part of Spain. A few tables and chairs outside the shop mean anyone purchasing a coffee or a beer are welcome to sit and enjoy the fabulous views of the golf course.

COSTA ESURI CLUBHOUSE

There is an 18-hole golf course at Costa Esuri. The links-style West Course, on the bank of the Guadiana River, is at the entrance to Costa Esuri where you will also find ample parking for the golf clubhouse.

There is a restaurant in the clubhouse, a lovely terrace with great views across Portugal, a driving range, and a pro shop. The golf club holds various events throughout the year which are publicised in the entrance lobby. It is possible to connect to the WIFI system at the club provided you purchase a drink.



Travel PLANS



GETTING TO COSTA ESURI

Costa Esuri is very easy to get to, with Faro airport (approx 45 mins), Seville airport (approx 1 hr 30 mins) and Jerez airport, all well served by many of the leading airlines such as British Airways, Thomsonfly, Easyjet, Flybe and Monarch, offering frequent low cost flights.

- 2 km to the highway on the Spanish border
- 3 km to Ayamonte, Costa de la Luz; Spain
- 3 km to Portugal, Algarve
- 5 km to the beaches of Ayamonte, Isla Canela
- 70 km to Faro Airport; Portugal
- 150 km to Sevilla Airport, Spain

TAXI

A local bus runs from Costa Esuri to Ayamonte. There are a number of taxi services in Ayamonte and below are two drivers who speak English: **Jose:** (+34) 615 934 066, **Juan:** (+34) 630 278 460 there is also an English speaking lady **Kirsty:** (+34) 663 420 120

TRAINS

The nearest station is in Huelva or across the border in Villa Real de San Antonio in Portugal. There is a high speed train link from Seville to Madrid but seats must be booked in advance. Any travel agent in Ayamonte can do this for you.

BUS SERVICES

There is a comprehensive bus and coach service from the main bus terminal in Ayamonte all over Spain and Portugal. Local buses run from various points in Ayamonte town centre down to the beach. Seville is definitely worth a visit if you don't fancy driving there is a good service from Ayamonte at least 3 times a day.

Golf courses in the **HUELVA REGION SPAIN**



COSTA ESURI GC

Yards: 6670 Par: 72

The West course is well worth playing and the greens are in excellent condition and the course overall is quite interesting. The front nine runs back and forth alongside the Guadiana River (the border between Eastern Algarve & Spain) and offers some great views. It has a very “links like” feel to it. The back nine is more inland and a little more traditional with more water features to challenge every level of golfer.

Stroke index 1 is currently the Par 3 12th, a fairly long (169 meters from the yellow) carry across water. An enjoyable course.

ISLA CANELA GC

Yards: 6833 Par: 72

Isla Canela is a relatively flat, open course but do not take it lightly. Water comes into play on no fewer than 10 holes and straying from the fairway leads to big trouble so accurate play is required. Good clubhouse.

ISLANTILLA GC

Yards: 1-9: 3187, 10-18: 3125, 19-27: 3323 Par: 35, 36, 36

El Rompido Gold Club opened mid-2003 to fantastic reviews throughout Europe. The original El Rompido South Course is more challenging and beautiful course, and with the recent addition of the fabulous El Rompido North Course the reputation of this superb facility can only grow. The El Rompido Gold Club South Course hosted the 2004 & 2005 final of the national Daily Mail Fourcomes, and is hotly tipped to host many more national and international tournaments in coming years.

The El Rompido South Course itself sprawls across an intriguing mix of parkland and marshland and offers some amazing views – the walk from the 8th and 9th tee takes you across a 650ft pontoon right across the protected marshland where you can see freshwater crabs and an abundance of bird life.

Winding through the protected salt marsh area the El Rompido – North Course is a superbly designed test of gold. With a varied range of hole styles the course has a test in store for players of all standards/ the front nine features a run of holes with very tight drives – a typical “risk and review” opening 9; while the back 9 is shorter, but demands greater accuracy from the fairway into smaller target greens which are of a consistently high standard.



Spanish golf

COURSES CONTINENT



NUEVO PORTIL

Yards: 5988 Par: 71

Located in an area with natural vegetation, mainly populated with pine, running along the sea to the south. This sandy field with its mild features includes a great variety of sceneries with even areas and gentle slopes, perfect for a round of golf. While the course's smart technical design is suitable for international championships; golfers of every level will find the course enjoyable.

BELLAVISTA GC

Yards: 6276 Par: 70

Few visitors to southern Spain realise that this area with first visited and colonised by the British well over 100 years ago. Attracted by the mineral resources at the Rid Tinto mines north of Huelva many Britons, particularly Scots, came to find wealth and a new life. With them they brought their two main sporting passions – golf and football. From the sporting interests and enthusiasm of these British pioneers the oldest golf club

in Spain, Bellavista (1916), and the oldest football club, Huelva FC, were established. The result of the early development at Bellavista Golf Course is a course and club that is more traditional than the usual Spain offering.

This is true members club in the British style. More undulating than many in the coastal area, the course is a challenge for most golfers that belies its par of just 70. With a number of long par 5's and also some lengthy par 4's, just to reach the fantastically manicured greens in regulation will be an achievement for many.

Just to say that you have played at the oldest course in the country which has become the biggest golf destination in Europe should be enough for most true golfers.

DUNAS DE DONANA GC

Yards: 6425 Par: 71

Located in the heart of the Donana National Park, in an area of outstanding natural beauty. A true test of golf with many different kinds of hazards including its famed island green.

Golf courses on the **EASTERN ALGARVE PORTUGAL**

MONTE REI GC

Yards: 7197 Par: 72

Situated in the unspoiled Eastern Algarve region on the southern coast of Portugal, Monte Rei Golf & Country Club – a Jack Nicklaus Signature Golf Course – in over 1,000 acres of countryside it is sure to become one of the premier golf resorts in Europe. The course itself is unusual in that it will have five par-5 and five par-3 holes, built around five lakes and, because of this, it will play longer than 7197 yards. Naturally, in addition to all of this, there will be a world class driving range with extensive practice facilities. All green fee rates at Monte Rei are inclusive of shared golf cart, bottled waters, course guide, and complimentary access to the facilities prior to play with Callaway balls and a personalized engraved bag tag.

QUINTA DO VALE GC

Yards: 7119 Par: 72

Designed by Seviriano Ballesteros, Quinta de Vale Golf Resort features an 18 hole Championship layout. Marvelously integrated in the landscape and with a luxurious view over the Guadiana River, the course sits into a natural valley overlooked from the Clubhouse. At Quinta do Vale, players will notice Seve's creativity as well as his promise: To please everyone no matter what their handicap is. Numerous dogleg holes, wide fairways and obstacles enhance the course quality and its breath-taking surroundings...the challenge waits at Quinta do Vale Golf Resort.

BENAMOR GOLF CLUB

Yards: 6017 Par: 71

Located about 30 minutes east of Faro, close to Tavira, this layout opened in May 2000 and is very popular. The course was adapted from Henry Cotton's original concept and offers an interesting challenge amid peaceful surroundings. Cork oaks, water and contoured greens feature prominently and it is well worth the drive.



CASTRO MARIM ATLANTIC GC

Yards: 6010 Par: 72

Opened in March 2000, and the first phase of a luxury resort, Castro Marim brings further weight to the impressive golf portfolio east of Faro. The layout demands accurate play and has stunning mountain, river and sea views. The challenging aspects of the course, whilst providing interest to the expert, are also a test to the ability of the average handicap golfer and yet remain pleasurable to both.

QUINTA DA RIA

Yards: 6517 Par: 72

This splendid new course is located 6 kms east of Tavira and opened in 2001. The first of two 18-hole golf courses (see Quinta de Cima below) extends itself in a spectacular location on the coast of the eastern Algarve, known locally as "Sotavento". Quinta de Ria, situated in the Ria Formosa Nature Reserve, has already been described by experienced golfers as the most breath taking golf course in the region. In fact, there will be no houses, villas, apartments to distract you from your game: just you and nature.

QUINTA DA CIMA GC

Yards: 6950 Par: 72

Sister course to Quinta da Ria (see above), this layout opened for play in the summer of 2002 and is another of excellent quality. Set among olive groves it is a tougher test of golf than Quinta da Ria with very tricky greens.

Activities in **SPAIN**

RESTAURANTS & BARS

The nearest bars, cafes, restaurants, serving traditional Spanish tapas and raciones, can be found in the pedestrianised area of Ayamonte town Centre.

MESON JUAN MACIAS

Spanish country fair. Situated in the Plaza de la Conronacion and known for the famous “cerdo iberico” products made from the black pigs who lead a free range life eating acorns 0which gives the meat its distinctive flavour.

LPA

Great tapas restaurant – excellent food with a modern twist to tapas.

CLAVEL BISTRO BAR

Situated in the back square – live music, good choice for families – more traditional English menu.

EL CHOCO

Traditional fish restaurant in Ayamonte tapas style

PUNTA DEL MORAL MARINA

Typical holiday-type bars catering to tourists along with more traditional sea food restaurants can be found at the Punta del Moral marina area on Isla Canela, near the hotel Riu Atlantico.

VILLABLANCA

La posada – Bustling village restaurant – good food and great atmosphere Meson Juan Macias – Like the Ayamonte restaurants offers great frilled meats.

SAN LUCAR DE GUADIANA

Casa Guabibi – Combine the pleasant drive to San Lucar de Guasdiana with a leisurely meal in the lovely surroundings of Casa Guabibi, for a lovely day out

TEL: 0034 – 959 388 102



Activities in PORTUGAL

RESTAURANTS AND BARS

The Castro Marium gold club over the border is open to non-members and offers snacks, lunches and formal evening meals. Sit outside and enjoy a fabulous view: **TEL: 00351 - 281 510 330**

In Vila Real de Sao Antonio:

CAFÉ LATTE

Excellent coffees, afternoon teas and cakes. In a good position for people watching in the lovely cobbled streets of Vila Real de Sao Antino.

In Montegordo:

GOA

Goa - Indian restaurant
Tel: 00351 - 281 543 499

EL PAPAGAYO

Bar/restaurant in Caribbean style. Great tapas night every Saturday (reservation recommended). Good for Cocktails.
Tel: 00351 - 8900 447

NAVEGANTE

Dishes from the Portuguese island of Madeira.
Tel: 00351 - 281 511 824

VICIUS

Algrave cuisine is a delightful setting of a 19th century fisherman's cottage.
Tel: 00351 - 927 114 384

O INFANTE

Serves a fabulous selection of dishes. Live music. Very popular. Booking advised for weekends in the summer.

NB closed in November

Tel: 00351 - 281 956 817

PRAIA VERDE - PEZINHOS N'AREIA

Restaurant at the beach serving mostly fish - excellent food and drink.

A' Terra - New **351 281 530 600** traditional gastronomy

Then there's the rest of the Costa de la Luz and the Algarve to explore! Should you find a restaurant that you think others would like, please feel free to leave a card or details in the back of this book.



Places to visit in **COSTA DE LA LUZ**

PUNTA UMBRIA

One of the most popular of all the beaches in Southern Spain with water sports and long sandy beaches flanked by small sand dunes.

EL ROMPIDO

A small fishing post with a beach separating the river from the sea with trees surrounding it for coverage in the heart of the day. Ideal for families, gently sloping islet for safe swimming.

EL RICIO

Known as 'John Wayne City or the Western Town'. See horses tied up outside bars with sandy streets were you would imagine the locals waiting for the cowboys to arrive! This village has a special religious significance in Andalusia.

DONANA NATIONAL PARK

See nature in its original form. Spain's lovely national park & the largest sand dunes in Europe; refuge for thousands of endangered species of birds who nest in the marshlands. Visitors can still see half hidden among the pine trees, straw thatched huts like the dwellings of the former inhabitants of the area, who lived mainly by fishing and charcoal burning.

MAZAGON

One of the longest beaches in Southern Spain, stretching for almost 18km. With white cliffs providing a natural windbreaker, this is a must for surfers and other water sports enthusiasts.

SEVILLA

A wonderful city full of history, fabulous architecture and of course the beautiful cathedral. A visit to Seville wouldn't be complete without wandering through



the narrow street of the old quarters of the city. You'll find delightful hidden corners to explore everywhere you turn. From fantastic tapas bars to culture and great designer shops, Seville is a must see city!

ISLA MAGICA

A theme park just on the outskirts of Seville ideal from the young and young at heart.

BULLULLOS DEL CONDADO

Between Huelva and Seville this fertile area produces some well-known Spanish white wines. Any local bar will offer local produce and many have cuevas (cellars) offering tasting sessions.

JEREZ DE LA FRONTERA

Produces of the world finest Sherries, Jerez is the place to go if you fancy a tipple. On the outskirts of this pretty town is the famous "Circuito de Jerez" where Formula One test their cars are ready for the forthcoming season, usually in February. The circuit is also home to the Spanish Moto GP.

Places to visit in **THE ALGARVE**

Western Algrave

LARGOS

Visit the Golden church, the statue of Henry the navigator, the old fort and the site of the first European slave market. Also see the longest beach in the Algrave.

SAGRES

Enjoy a leisurely stroll around a typical Portuguese fishing village, and stay for an evening meal at one of the many delightful restaurants.

CAPE ST. VINCENT

Drive west to the “end of the world”; see spectacular scenery and the sunset at Europe’s most south-westerly point.

Eastern Algarve

VILAMOURA

Gold courses, marina, bars and restaurants. Stop for a coffee or an elaborate ice-cream at the marina whilst watching the people pass by – there are plenty of luxury yachts here, so you might see someone famous!

FARO

The capital of the Algarve – visit the old town and the ‘church of bones’. Forum Algarve – a modern shopping mall, with a cinema which shows most films in English with Portuguese sub-titles. Fast food restaurants.

MONEGORDO/VILA REAL DE SAN ANTONIO

Visit the natural border between Spain & Portugal – the Guadiana River, spend some time at the nature reserve and on the beach at Montegordo.

TAVIRA

Stop at the pretty town of Tavira, known for its excellent fish restaurants and many churches.

ALCOUTIM

Travel along the EN122, visiting the dams and reservoirs of Beiche and Oldeleite en route. Enjoy lunch in Alcoutim, visit the historic castle or spend time at the river beach. Don’t leave without buying the locally produced cake from the market stall which is near the boat moorings on the river Guadian

Monchique

SILVES

Once the capital of the Algarve, Silves is a historic town set on the river Arade. A roman bridge crosses the river and a cathedral and castle overlook the town.

CALDEA DE MONCHIQUE

Try the natural spring water and look 10 years younger in the pretty town.

FOIA

Spectacular views from the highest point in the Algarve.





BEACHES

You will find some of the best and most unspoilt beaches in all of Spain along the Costa de la Luz.

ISLA CANELA

Famous for its fine white sand, set in a landscape full of pines and salt marches rich in wildlife.

ISLA CRISTINA

2,100 hectares of nature reserve separated by channels and estuaries. It is joined to the extensive salt flats and lies alongside the endless ridge of sand dune topped by a forest of stone pines and eucalyptus trees that run parallel to the coast line offering shady places to park and picnic.

ISLANTILLA

A beautiful beach and an excellent place to relax both in the summer and during the mild winters. It is quite and there are water sports available.

PLAYA DE PUNTA UMBRIA

Another of Huelva's beautiful coastal beaches with a watchtower dating back to the beginning of the 17th century. This is a busy, lively beach with a fishing port

where fresh fish and shellfish are unloaded daily in the fish market there.

EL PORTIL

This coastal lagoon is a protected area with a wealth of vegetation and wildlife.

ALGARVE

There are a number of beautiful beaches located along the Algarve, the nearest is the Montegordo.

BEACH WARNINGS:

Flags are flown on the beaches to signal weather bathing is safe or not:

RED

Danger – bathing is forbidden

YELLOW

Take care, some danger. No swimming but paddling is allowed

GREEN

Safe Swimming is allowed

CHEQUERED

This means there is no lifeguard.

Kids STUFF

Spain

ISLA MAGICA

Isla Magica is a theme park on the outskirts of Seville. It comprises of seven different areas. These include Amazonia with its white knuckle rides, Gateway to the Americas with its impressive shows, games and entertainment and also Quetzal, the fury of Gods, where you will be challenged to ten different tasks. As well as the rides there are shops, street parades, shows and many more attractions.
Tel: 0034 954 48700 for opening times & prices.



GO KARTING

Situated in Cataya. The opening hours are 10.00hrs - 14.00hrs & 16.00hrs - 21.00hrs daily. Kartodromo de Cartaya **Tel: 608 795 244**

WATERPARKS

There are two water parks situated less than 2 miles apart on the Algarve which can be found by travelling in the general direction of Vilamoura.

Aquashow, situated at Semino
- EN396 - 8125, Quateria

Tel: 00351 -289 389 396 for opening times & prices.

Slide & Splash is located near Estombar to the west of Lagoa, on the main road N125 road, Call free on 00 351 282 341 685

If you wish to stay in Spain, there is a water park situated near Cartaya (on the road to El Rompido) called Aquopolis.

Portugal

ZOO MARINE

At zoo marine you will find an exceptional oceanographic park, unique to the Algarve, with an aquarium, shark tunnel, sea lions, parrots and a bird of prey show, but of course the stars of the show are the dolphins. Here you will find a snack bar, restaurant, fairground rides, picnic and sunbathing areas as well as a swimming pool. A fantastic day out for all the family. **Tel: 0351289560300** for opening times & prices.





WALKS

All around Costa Esuri are some beautiful walks in the country side (el campo). If you are a keen birdwatcher then this is the place to come!

SENDERO – PUNTA DEL MORAL

About 300 metres from Punta del Moral is a walk sign-posted 'Sendero'. This is an excellent nature reserve to spot wildlife, birds (especially storks) and also to see the famous salt marshes that are synonymous with the Costa de la Luz.

A gate marks the entrance, walk to the right of the gate, just over the bank if the gate is locked. Arrows mark the path and you do a circular route. Take your camera and binoculars so as not to miss any sights on offer.

There are superb views of Isla Cristina, the next resort, where you can see the fisherman at work. This is a leisurely flat walk and takes approximately one and a half hours.

MONTEGORDO – PORTUGAL

At the end of the promenade is a delightful nature reserve that runs along the edges of the beach. Look out for the local lizard that makes its home here.

PEGO DEL INFERNO – INLAND FROM TAVIRA (WELL SIGN POSTED)

This pretty area is well worth the journey to find such an oasis in the middle of the countryside. A small river feeds a waterfall that flows into a secret lagoon – bring your swimming trunks!



*If you're interested in a villa
call us today or visit us on our
website to check availability!*

☎ 01489 585 555 🖱 holidayvillaspanishalgarve.com ✉ spanishrentals@beals.co.uk